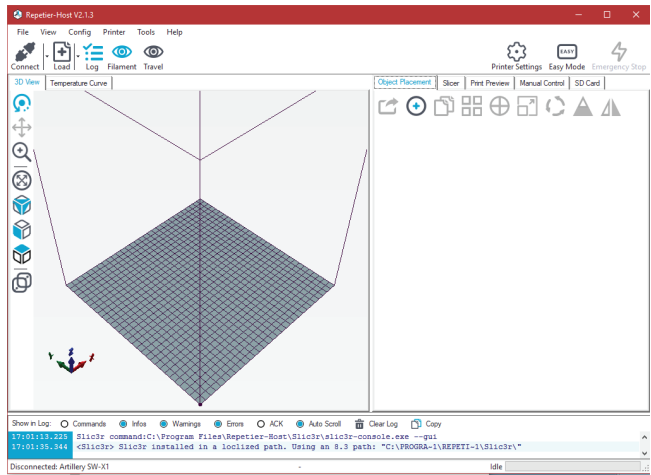


Slicer Preparation - Step 1

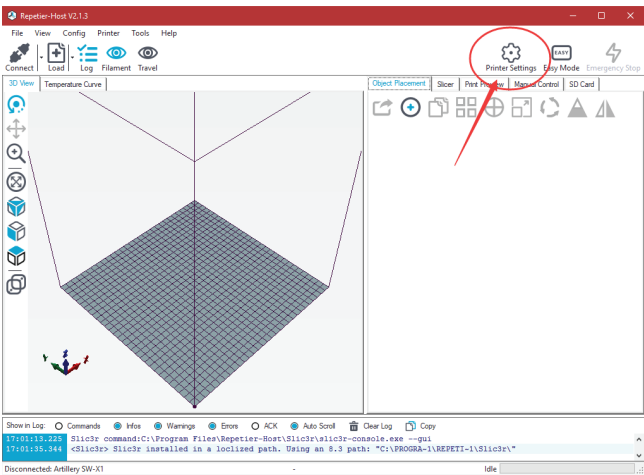
This printer works with most slicing/printing software like Simplify 3D, Cura, Repetier-Host etc. But we will go in details for Repetier-Host software and tell you how to set it up so that you can make your first print. First, install the Repetier-Host comes on the USB stick or you can download a copy from <http://www.repetier.com/>

After installation and start the software, you should see the following screen:



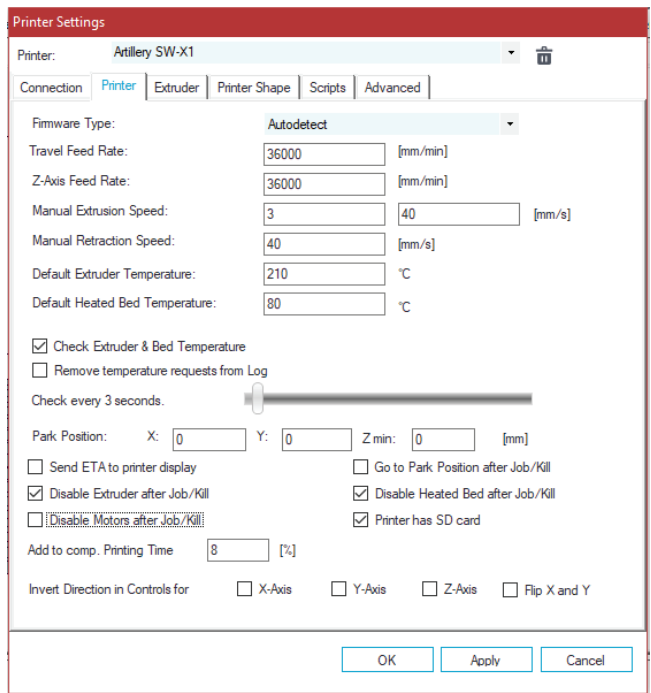
Slicer Preparation - Step 2

Click on Printer Settings button on the top right corner to set up your printer first.



Slicer Preparation - Step 3

Install Repetier-Host. Click on Printer Settings button on the top right corner. Then go to Printer tab, and configure the printer as shown in below:



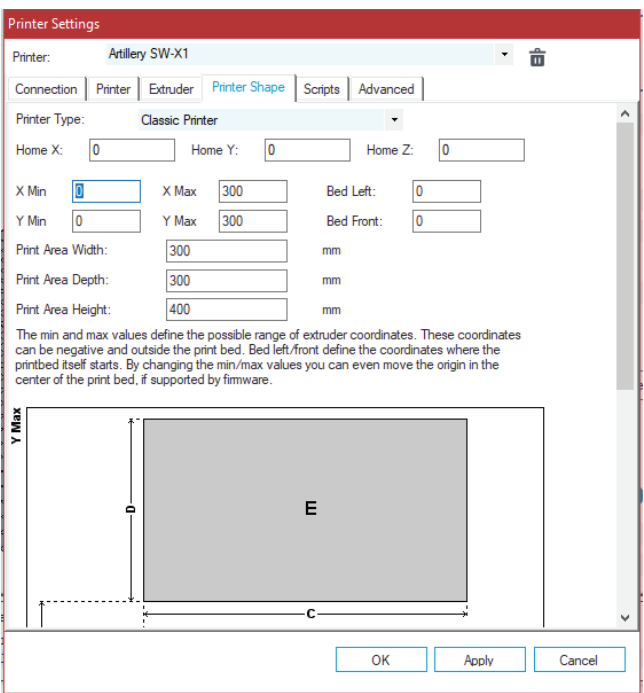
Slicer Preparation - Step 4

Go to Printer Shape tab, configure with the following parameters:

X Max: 300; Y Max 300;

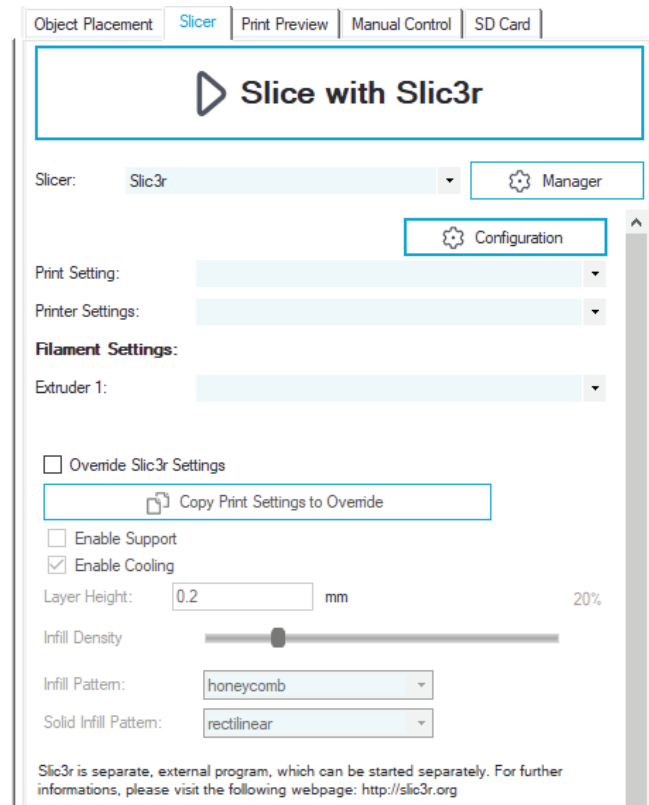
Print Area Width/Depth: 300;

Print Area Height: 400



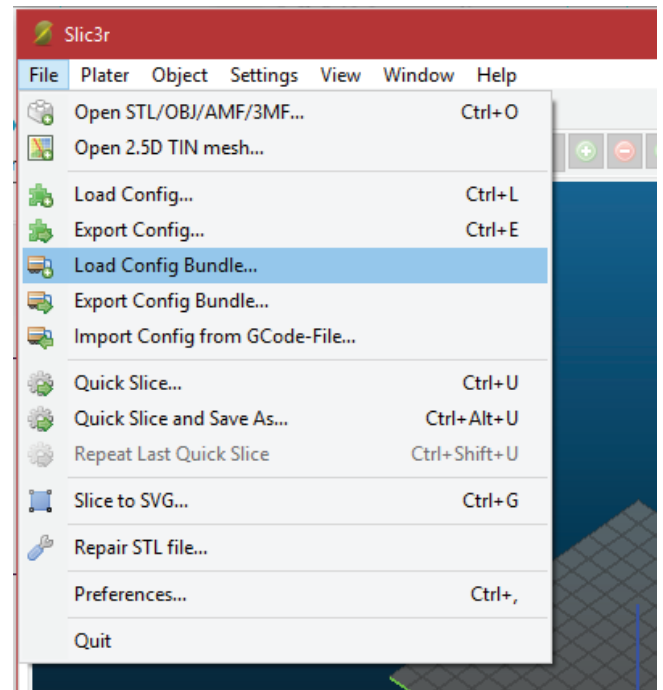
Slicer Preparation - Step 5

Go back to the home screen, go to Slicer tab on the right, choose Slic3r as Slicer and click on Configuration button.



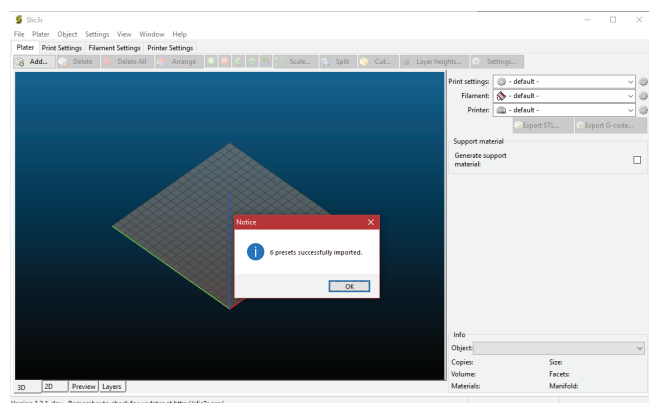
Slicer Preparation - Step 6

On the Slic3r, click on File -> Load Config Bundle... and load the config file supplied on the USB comes with the machine.



Slicer Preparation - Step 7

When load finished, you will see the screen below, and you can close this window afterwards.



Slicer Preparation - Step 8

Choose the desired settings when slicing. You may need to tweak the settings according to the filaments of your choice.

